

# datcs

DRUG & ALCOHOL TESTING COMPLIANCE SERVICES

All supplies pricing listed below does not include sales tax and/or shipping cost if applicable. Unless otherwise specified the assumed quantity for selected items will be defaulted to only 1 per item. I.E 1 box, bag, kit, etc.

## FEATURED TESTING ITEMS



### Phoenix® 6.0BT Evidenceal Workplace Breath Alcohol Tester

Lifeloc Technologies manufactures the most advanced **Evidenceal Breath Tester (EBT)** on the market for DOT and non-DOT alcohol testing. Our 1" diameter platinum fuel cell is warranted for the life of your instrument.

The Phoenix 6.0BT includes our signature **EasyMode™** compliance software, our **PermAffix™** Labeling System and **Bluetooth** wireless communication for unparalleled testing mobility, productivity and ease of use. No other evidenceal breath tester is easier to use, more accurate or reliable.

EasyMode software effortlessly guides users through the DOT testing protocol ensuring compliance and valid breath alcohol test results. Secure wireless connectivity between the printer and the Phoenix 6.0BT make testing easy inside or on the road. The PermAffix Labeling System eliminates the cost and hassle of security tape with tamper evident self-adhesive labels perfectly sized to fit the DOT Alcohol Test Forms. Our archival quality ATF labels are always crisp and clear allowing test results to be reliably copied, faxed or scanned.

When used with the optional **EASYCAL®** automatic calibration station, the Phoenix 6.0BT provides for automatic instrument calibration and cal-checking, record retention and gas management.



Antimicrobial cases protect from bacteria due to residual saliva residue. No slip grips offer additional protection from drops and falls.



Pairing the Phoenix 6.0BT with our PermaAffix label printer in rugged sturdy case is a simple solution for your alcohol testing needs.



Our GK kit comes complete with a 34 liter dry gas tank for easy calibration and calibration checks for your EBT.

## CHECK OUT THE STANDARD PHOENIX 6.0BT KIT FEATURES BELOW:

- DOT/NHTSA approved for evidential testing
- Fastest response and recovery times
- **EasyMode** compliance software
- **PermAffix** tamper evident ATF printer
- Anti-microbial instrument housing
- Automatic, Manual and Passive sampling modes
- Auto adjusting backlit LCD for excellent day or night visibility
- Patented **EasyTab™** hygienic mouthpieces
- Three testing modes: Automatic, Manual, and Passive
- Calibration reminders and lockout features
- Automatic air blank
- Onboard barometric pressure sensor for easy calibration
- Manual or automatic (using **EASYCAL®**) calibration, cal-checks and gas management
- 1" platinum fuel cell with lifetime warranty\*
- Secure wireless printer and/or keyboard options
- Watertight, dustproof, chemical resistant carrying case
- Optional computer interface and remote diagnostics using **AlcoMark®**
- 2 year deluxe warranty



## EV30T Kit

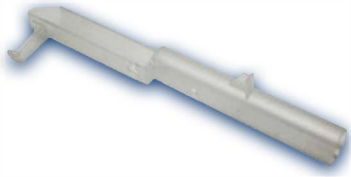
Includes EV30 Breath Alcohol Tester, Thermal Printer, Printer Charger, Printer Cable, 1 Roll of Thermalast Printer Paper, Carrying Case, 4 AA batteries, 10 Mouthpieces, Operations Manual, Calibration Adapter, Wrist Strap, and 1 Year Deluxe Warranty

Convenient and affordable, the EV30 Kit promises to make workplace alcohol testing a snap. The kit pairs an EV30 evidential breath alcohol tester with our fast and compact thermal printer for fast, accurate testing results.

- DOT/NHTSA approved
- Three Testing Modes: Automatic, Manual and Passive Testing
- Automatic Air Blank required for DOT evidential testing
- Easy to Understand User Prompts
- Fully Automated Operation, simply attach a mouthpiece and the unit is ready to test
- Calibration Reminders and Lockout Features make following DOT protocols simple
- Long Battery Life
- 250 Test Memory
- Full Sized 1" Diameter Platinum Fuel Cell
- Computer Interface and Remote Diagnostics Using **AlcoMark®**



# EasyTab Mouthpiece, 100/pkg



Lifeloc's patented mouthpiece design is the gold standard for operator safety and hygiene. The EasyTab provides an ejectable trigger ensuring that the operator never touches the "wet end" of the mouthpiece. Easy to use, simply push the trigger to detach the mouthpiece after finishing a breath test. As an additional safeguard, the mouthpiece channels the breath flow away from the operator. EasyTab Mouthpieces are used with the following Lifeloc breath alcohol testers: **FC10, FC10Plus, FC20, FC20BT, EV30, Phoenix 6.0, Phoenix 6.0BT.**

# PermAffix Labels (1/pk)

For use with Lifeloc's **Phoenix 6.0 PermAffix** or **Phoenix 6.0BT** printer. Our PermAffix labels are sized to fit DOT and non-DOT 3 part alcohol testing forms. PermAffix labels uses a special adhesive and label material to ensure tamper evident performance. Each label, also incorporates safety slits on all four corners to provide an extra layer of protection. Approximately 140 labels per roll.



**Alcohol Testing Forms customized pre-printed-1.50 per form + sales tax and shipping if applicable**

# Alco-Screen Saliva Alcohol Test - DOT Approved -



Perfect for workplace zero tolerance alcohol testing, the Alco-Screen DOT approved saliva tester is fast, cost effective and minimally invasive. The saliva alcohol tester detects for the presence of alcohol at .02 or greater blood alcohol concentration. Testing is simple, place the alcohol strip on the tongue to saturate the testing pad. If a line appears after 4 minutes, this is an indication of a positive screening result of a .02 or greater alcohol concentration.

The .02 DOT Screening approved Alco-Screens are sold in boxes of 24 individually wrapped test strips

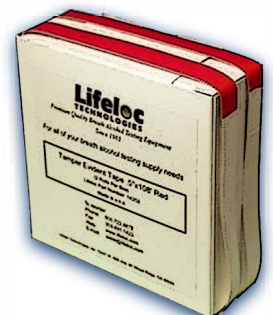
# EV-30 Tamper Evident Tape

Used for securing printed test results to DOT or non-DOT forms and for sealing urine collection cups Lifeloc's tamper evident tape is guaranteed not be removable without fracturing and showing signs of tampering.

**Size: .5" x 108'**

**Color: Red**

**Quantity: 2 Rolls/Box**



# EV-30 Tamper Evident Tape



Used for securing printed test results to DOT or non-DOT forms and for sealing urine collection cups. Lifeloc's tamper evident tape is guaranteed. Not removable without fracturing and showing signs of tampering.

**Size: .5" x 108'**

**Color: Yellow**

**Quantity: 2 Rolls/Box**

## Thermalast Thermal Paper (4PK)

**Thermalast** thermal imaging paper is laboratory tested to maintain image quality up to 7 years in normal office conditions...up to 2 years longer than required by DOT regulation. Thermalast is coated on the front and the back for image sharpness and durability. Unlike the inexpensive receipt and fax paper, Thermalast will not fade or darken when stored or exposed to long term office conditions. 4 rolls per pack.



### SELECT YOUR ITEMS BELOW

## Order Products

- Phoenix 6.0 kit (\$2,600.00)**-Includes Phoenix 6.0 Breath Alcohol Tester, PermAffix label printer, 1 roll of the tamper resistant PerAffix labels, 34L Dry Gas Tank, Dry Gas Regulator, Printer Charger, 1 roll Thermalast Printer Paper, Carrying Case, 4 AA Batteries, 10 Mouthpieces, Operations Manual, Calibration Adapter, Wrist Strap

Quantity (if more than 1) \_\_\_\_\_

- EV-30T GK Kit (\$1,300.00)**-Includes EV30 Breath Alcohol Tester, Thermal Printer, 34L Dry Gas Tank, Dry Gas Regulator, Printer Charger, 1 roll Thermalast Printer Paper, Carrying Case, 4 AA Batteries, 10 Mouthpieces, Operations Manual, Calibration Adapter, Wrist Strap

Quantity (if more than 1) \_\_\_\_\_

**Lifeloc Breath Alcohol Mouthpieces**--Lifeloc's patented mouthpiece design is the gold standard for operator safety and hygiene. The EasyTab provides an ejectable trigger ensuring that the operator never touches the "wet end" of the mouthpiece. Easy to use, simply push the trigger to detach the mouthpiece after finishing a breath test. As an additional safeguard, the mouthpiece channels the breath flow away from the operator.

Select desired bag size:  100 Count - \$23.99  250 Count - \$56.99

- Alcohol Pro 02 Screening Device-24 Per Box (\$65.00)**-Perfect for workplace zero tolerance alcohol testing, the Alco-Screen DOT approved saliva tester is fast, cost effective and minimally invasive. The saliva alcohol tester detects for the presence of alcohol at .02 or greater blood alcohol concentration. Testing is simple, place the alcohol strip on the tongue to saturate the testing pad. If a line appears after 4 minutes, this is an indication of a positive screening result of a .02 or greater alcohol concentration.

Quantity (if more than 1) \_\_\_\_\_

- Permafix Labels for Phoenix 6.0 EBT-4 Rolls Per Box (\$81.85)**-For use with Lifeloc's Phoenix 6.0 PermAffix or Phoenix 6.0BT printer. Our PermAffix labels are sized to fit DOT and non-DOT 3 part alcohol testing forms. PermAffix labels uses a special adhesive and label material to ensure tamper evident performance. Each label, also incorporates safety slits on all four corners to provide an extra layer of protection. **Approximately 140 labels per roll.**

Quantity (if more than 1) \_\_\_\_\_

- Thermalast Thermal Paper for EV-30 Breath Alcohol Tester-4 Rolls Per Box (\$12.00)**

Quantity (if more than 1) \_\_\_\_\_

**Lifeloc Red Tamper Evident Tape for EV-30 Breath Alcohol Tester-2 Rolls Per Box -2 Sizes**

- .5"(\$21.06)
- 1.375" Red with Dispenser (\$28.22)

**Lifeloc Yellow Tamper Evident Tape for EV-30 Breath Alcohol Tester-2 Rolls Per Box -2 Sizes**

- ½ Yellow (\$21.06)
- 1.375 inches 19.25

- 12 Panel with Expanded Opiates Instant Screening Device-25 Per Box -1 Box (\$175.00)**

As an easy and economical way to obtain results for multiple drugs, this 12 panel drug test card is one of the most popular onsite urine drug testing kits on the market. This five panel drug testing kit get results in less than five minutes with a shelf life of 12-24 months and is a FDA Approved/CLIA Waived drug test. Ease of use, fast results and excellent pricing is what defines a Medical Disposables 5 panel drug test kit. Need to list what drugs are tested/included in this panel.

**5 Panel Instant Screening Device-25 per box (\$125.00)**

As an easy and economical way to obtain results for multiple drugs, this 5 panel drug test card is one of the most popular onsite urine drug testing kits on the market. This five panel drug testing kit get results in less than five minutes with a shelf life of 12 24 months and is a FDA Approved/CLIA Waived drug test. Ease of use, fast results and excellent pricing is what defines a Medical Disposables 5 panel drug test kit. Need to list what drugs are tested/included in this panel.

**DATCS Proprietary Point of Collection Forms (\$20.00 Per Ream)**

**DATCS POCT Tamper Evident Labels-1,000 Labels Per Roll**

**Lab-Based DOT Urine Custody and Control Forms**

Quantity Needed  25  50  100  200

**Lab-Based Non-DOT Urine Custody and Control Forms**

Quantity Needed  25  50  100  200

**Urine Cups (50 Per Box)**

Quantity Needed  1 Box  2 Boxes  3 Boxes  4 Boxes

**COMPANY INFORMATION**

Contact \_\_\_\_\_

Address for Shipping (if applicable) \_\_\_\_\_

City \_\_\_\_\_ State \_\_\_\_\_ ZIP \_\_\_\_\_

Phone # \_\_\_\_\_ Fax # \_\_\_\_\_

E-Mail \_\_\_\_\_

**PAYMENT INFORMATION**

Card Number \_\_\_\_\_

Name on Card \_\_\_\_\_

ZIP Code \_\_\_\_\_ Security Code \_\_\_\_\_ Expiration \_\_\_\_\_

Once completed, all supply order forms should be emailed directly to [accounting@datcs.com](mailto:accounting@datcs.com). Receipts will be sent to the email listed within 3 business days of the order. Thank you for trusting DATCS with your supply needs! If you have any questions regarding testing equipment, supplies, or additional service, please feel free to contact the Training dept at [training@datcs.com](mailto:training@datcs.com) or the customer service dept at [customerservice@datcs.com](mailto:customerservice@datcs.com)